

PA51-QD-08A Data Sheet

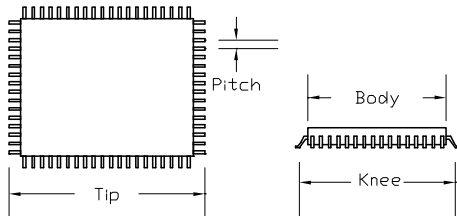
64 pin QFP socket/40 pin DIP 0.6" plug

Supported Device/Footprints

This adapter was created to program the 8752 core of a Philips Multi Chip Module. The part number is CV5790. The adapter allows programming of the QFP device in the 8752 DIP footprint.

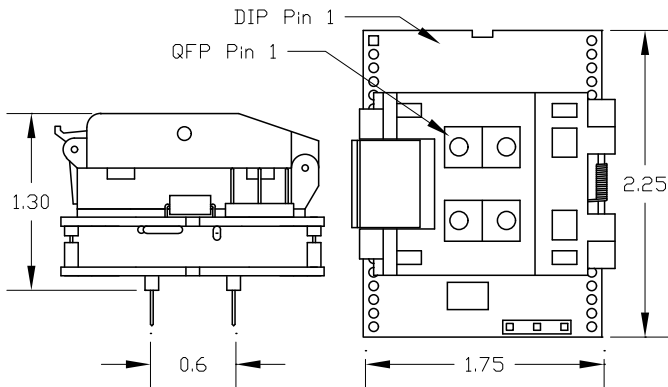
Mfgr	Device	Package	Device	Footprint Plug
Philips	CV5790	QFP SOT319-2	8751	40 Pin DIP

The QFP socket accepts packages with the dimensions listed below:



Body	20.0 mm x 14mm typ	Tip	23.9 mm x 17.9mm typ
Pitch	1 mm	Knee	22.3 mm x 16.3mm typ

Adapter Dimensions



Power Supply Connection

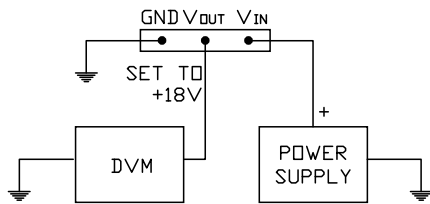


Fig. 1

The device requires an 18V supply. This power must be provided from an external source. The adapter employs an Opto Isolator as a switch. The switch connects 18V to the device when VDD (5V) is applied by the programmer.

Adapter Construction

The adapter is made up of 3 sub-assemblies. They assemble via connectors making the adapter modular. This way the sub-assemblies can be replaced when they wear out.

When disassembling the adapter take care not to bend the pins. When reassembling the adapter note the pin 1 indicators to align the parts correctly.

Test Socket

QFP test socket: (either one)

Enplas Part #: FPQ-64-1.0-08A

LSC Part #: 64QE-08A

Yamaichi# IC51-820-02-KS9376

LSC Part #: 64QE-KS

51QD08

Accepts the test socket and connects to the bottom board. Part of the wiring is performed on the top board.

P64-QD

Completes the wiring shown in the Adapter Wiring section and provides the DIP plug pattern.

Adapter Wiring

The following chart shows the connections from the QFP device to the adapter's DIP plug.

DEVICE	PLUG	DEVICE	PLUG
1	20	33	N/C
2	32	34	20
3	33	35	N/C
4	34	36	N/C
5	35	37	N/C
6	N/C	38	6
7	36	39	7
8	37	40	8
9	38	41*	9*
10	39	42	10
11	40	43	11
12	1	44	12
13	2	45	13
14	3	46	14
15	4	47	15
16	5	48	16
17	N/C	49	17
18	20	50	18
19	N/C	51	19
20	N/C	52	20
21	N/C	53	21
22	20	54	22
23	20	55	23
24	N/C	56	24
25	N/C	57	25
26	N/C	58	N/C
27	N/C	59	26
28	20	60	27
29	Vout**	61	28
30	20	62	29
31	N/C	63	30
32	N/C	64	31

* Signal tied to a 1K pull-up.

** See Fig. 1.



Adapters-Plus Inc.

P.O. BOX 900
Tracy, Ca 95378
ph.209-839-0200
fax.209-839-0235
email: sales@adapt-plus.com

PA51-QD-08A Data Sheet

Doc: 51QD08.DOC

Rev 5/14/99

Page 1 of 1