

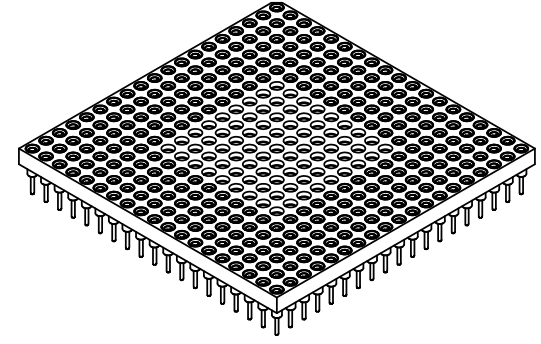
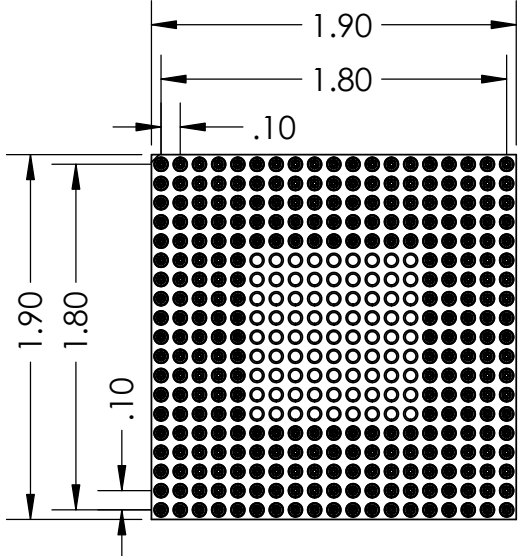
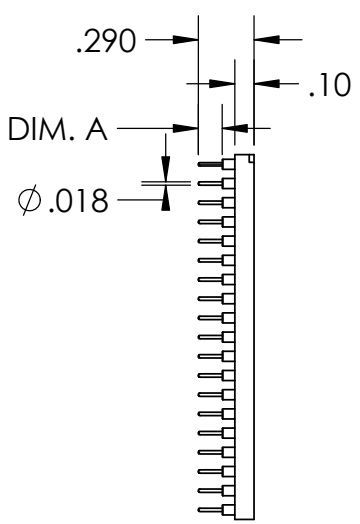
2

1

PART NUMBER	DIM. A
PS280A-0131GG-P	.125"
PS280A-0132GG-P	.180"
PS280A-0133GG-P	.215"

REVISIONS		
REV.	DESCRIPTION	DATE
A	INITIAL RELEASE	9/23/2020

B




B

A

- NOTE:
- INSULATOR MATERIAL: GLASS FILLED POLYESTER
  - FLAMABILITY RATING: UL94V-0
  - OPERATING TEMP: -55C TO +125C
  - ACCEPTS -.015-.021 DIAMETER PIN
  - SHELL MATERIAL: BRASS ALLOY C36000, 1/2 HARD
  - SHELL PLATING 10µ MIN. OVER NICKEL, 100µ MIN
  - CONTACT MATERIAL: BeCu
  - CONTACT PLATING: 10µ MIN. OVER NICKEL, 100µ MIN

**PROPRIETARY AND CONFIDENTIAL**  
 THE INFORMATION CONTAINED IN THIS DRAWING IS THE SOLE PROPERTY OF ADAPTERS-PLUS INC. ANY REPRODUCTION IN PART OR AS A WHOLE WITHOUT THE WRITTEN PERMISSION OF ADAPTERS-PLUS IS PROHIBITED.

UNLESS OTHERWISE SPECIFIED:	NAME	DATE
DIMENSIONS ARE IN INCHES	DRAWN AM	09/23/20
TOLERANCES:	CHECKED SB	09/23/20
FRACTIONAL ± .1	ENG APPR.	
ANGULAR: MACH ± .1	MFG APPR.	
TWO PLACE DECIMAL ± .01	Q.A.	
THREE PLACE DECIMAL ± .005	COMMENTS:	
INTERPRET GEOMETRIC TOLERANCING PER:		
MATERIAL		
FINISH		
DO NOT SCALE DRAWING		

 <b>Adapters-Plus Inc.</b> Ph: 209-839-0200 web: www.adapt-plus.com		
TITLE: <h2 style="text-align: center;">280 PGA SOCKET</h2> <h3 style="text-align: center;">19 X 19 GRID</h3>		
SIZE	DWG. NO.	REV
<b>A</b>	PS280A-013XGG-P	<b>A</b>
SCALE: 1:1	WEIGHT:	SHEET 1 OF 1

A

2

1