

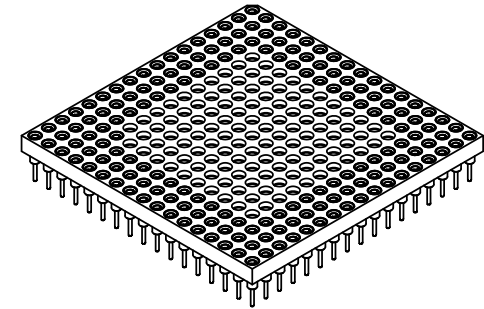
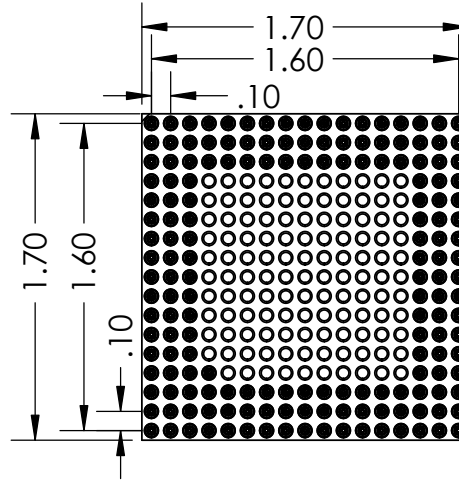
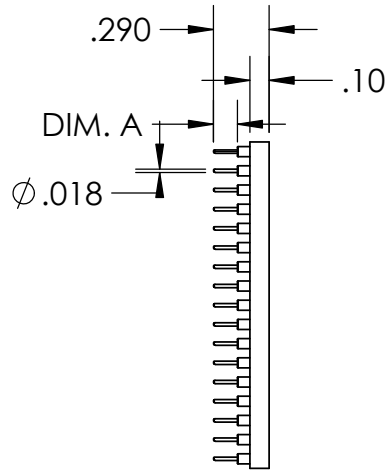
2

1

PART NUMBER	DIM. A
PS169B-0131GG-P	.125"
PS169B-0132GG-P	.180"
PS169B-0133GG-P	.215"

REVISIONS		
REV.	DESCRIPTION	DATE
A	INITIAL RELEASE	9/19/2020

B




B

A

- NOTE:
1. INSULATOR MATERIAL: GLASS FILLED POLYESTER
  2. FLAMABILITY RATING: UL94V-0
  3. OPERATING TEMP: -55C TO +125C
  4. ACCEPTS -.015-.021 DIAMETER PIN
  5. SHELL MATERIAL: BRASS ALLOY C36000, 1/2 HARD
  6. SHELL PLATING 10µ MIN. OVER NICKEL, 100µ MIN
  7. CONTACT MATERIAL: BeCu
  8. CONTACT PLATING: 10µ MIN. OVER NICKEL, 100µ MIN

**PROPRIETARY AND CONFIDENTIAL**  
 THE INFORMATION CONTAINED IN THIS DRAWING IS THE SOLE PROPERTY OF ADAPTERS-PLUS INC. ANY REPRODUCTION IN PART OR AS A WHOLE WITHOUT THE WRITTEN PERMISSION OF ADAPTERS-PLUS IS PROHIBITED.

UNLESS OTHERWISE SPECIFIED:	NAME	DATE
DIMENSIONS ARE IN INCHES	DRAWN	AM 09/19/20
TOLERANCES:	CHECKED	SB 09/19/20
FRACTIONAL ± .1	ENG APPR.	
ANGULAR: MACH ± .1	MFG APPR.	
TWO PLACE DECIMAL ± .01	Q.A.	
THREE PLACE DECIMAL ± .005	COMMENTS:	
INTERPRET GEOMETRIC TOLERANCING PER:		
MATERIAL		
FINISH		
DO NOT SCALE DRAWING		

 <b>Adapters-Plus Inc.</b> Ph: 209-839-0200 web: www.adapters-plus.com		TITLE:	
		<b>169 PGA SOCKET 17X17 GRID</b>	
SIZE	DWG. NO.	REV	
<b>A</b>	PS169B-013XGG-P	<b>A</b>	
SCALE: 1:1		WEIGHT:	SHEET 1 OF 1

A

2

1