

2

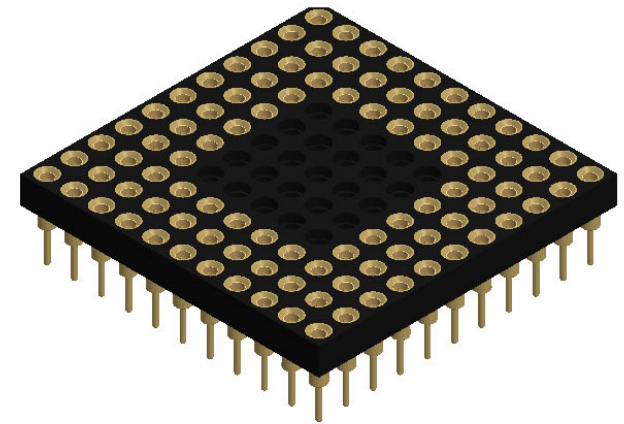
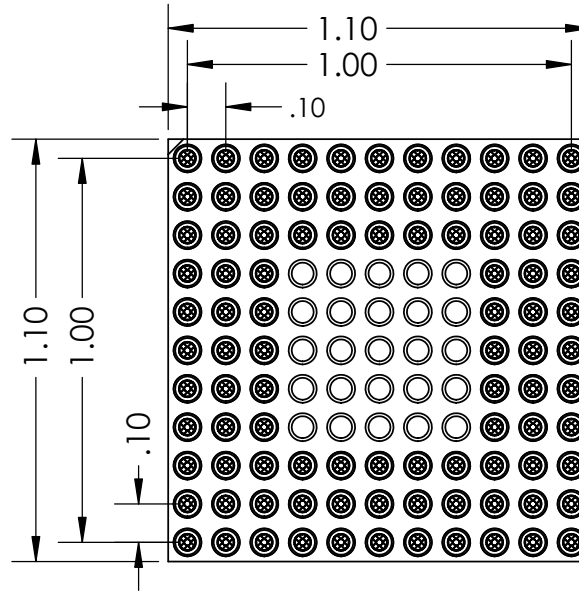
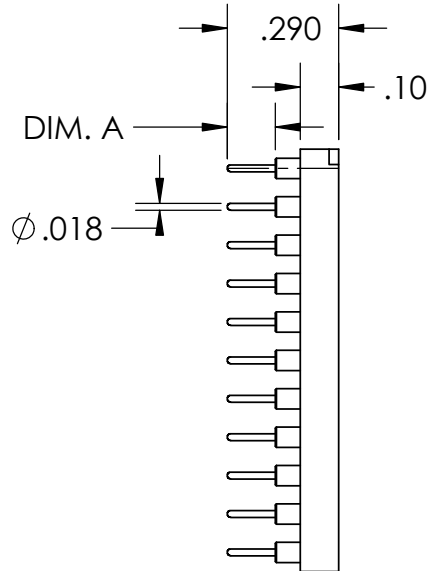
1

PART NUMBER	DIM. A
PS096A-0131GG-P	.125"
PS096A-0132GG-P	.180"
PS096A-0133GG-P	.215"

REVISIONS		
REV.	DESCRIPTION	DATE
A	INITIAL RELEASE	9/16/2020

B

B



A

A

NOTE:

- INSULATOR MATERIAL: GLASS FILLED POLYESTER
- FLAMABILITY RATING: UL94V-0
- OPERATING TEMP: -55C TO +125C
- ACCEPTS -.015-.021 DIAMETER PIN
- SHELL MATERIAL: BRASS ALLOY C36000, 1/2 HARD
- SHELL PLATING 10µ MIN. OVER NICKEL, 100µ MIN
- CONTACT MATERIAL: BeCu
- CONTACT PLATING: 10µ MIN. OVER NICKEL, 100µ MIN

**PROPRIETARY AND CONFIDENTIAL**

THE INFORMATION CONTAINED IN THIS DRAWING IS THE SOLE PROPERTY OF ADAPTERS-PLUS INC. ANY REPRODUCTION IN PART OR AS A WHOLE WITHOUT THE WRITTEN PERMISSION OF ADAPTERS-PLUS IS PROHIBITED.

UNLESS OTHERWISE SPECIFIED:

DIMENSIONS ARE IN INCHES  
 TOLERANCES:  
 FRACTIONAL ± .1  
 ANGULAR: MACH ± .1  
 TWO PLACE DECIMAL ± .01  
 THREE PLACE DECIMAL ± .005

INTERPRET GEOMETRIC TOLERANCING PER:

MATERIAL

FINISH

DO NOT SCALE DRAWING

	NAME	DATE
DRAWN	AM	09/16/20
CHECKED	SB	09/16/20
ENG APPR.		
MFG APPR.		
Q.A.		

COMMENTS:



Adapters-Plus Inc.  
 Ph: 209-839-0200  
 web: www.adapt-plus.com

TITLE:

96 PGA SOCKET  
 11X11 GRID

SIZE <b>A</b>	DWG. NO. PS096A-013XGG-P	REV <b>A</b>
SCALE: 2:1	WEIGHT:	SHEET 1 OF 1

2

1