

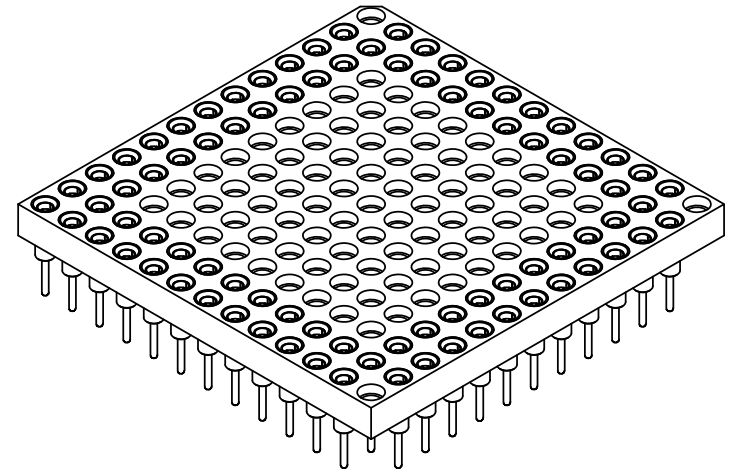
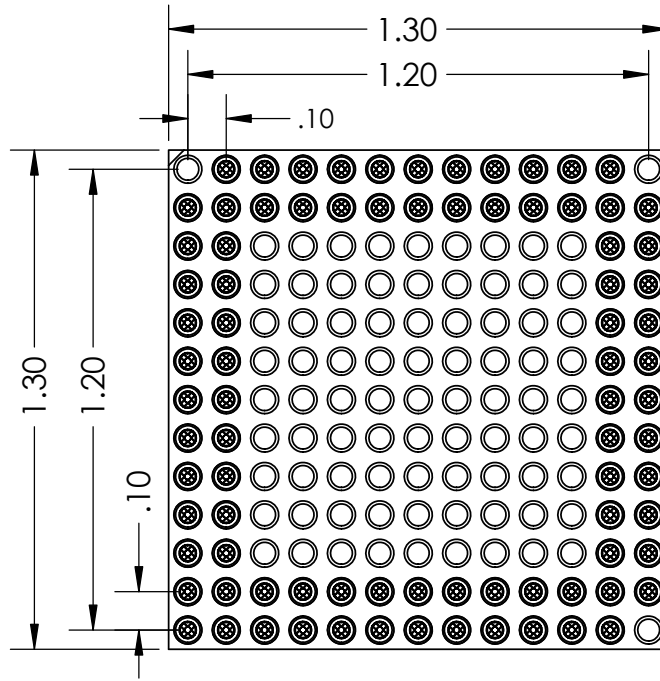
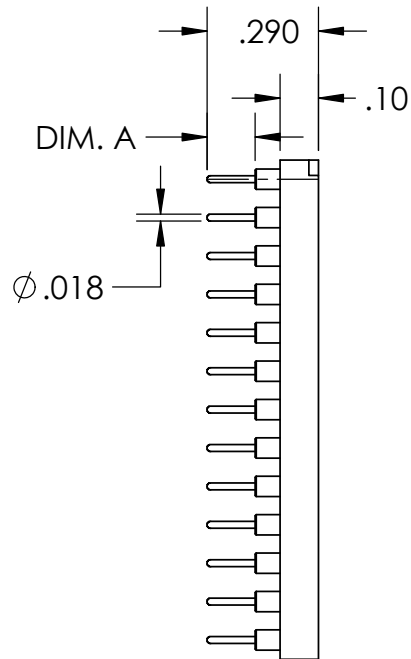
2

1

| PART NUMBER     | DIM. A |
|-----------------|--------|
| PS085B-0131GG-P | .125"  |
| PS085B-0132GG-P | .180"  |
| PS085B-0133GG-P | .215"  |

| REVISIONS |                 |           |
|-----------|-----------------|-----------|
| REV.      | DESCRIPTION     | DATE      |
| A         | INITIAL RELEASE | 9/16/2020 |

B




B

A

- NOTE:
- INSULATOR MATERIAL: GLASS FILLED POLYESTER
  - FLAMABILITY RATING: UL94V-0
  - OPERATING TEMP: -55C TO +120C
  - ACCEPTS -.015-.021 DIAMETER PIN
  - SHELL MATERIAL: BRASS ALLOY C36000, 1/2 HARD
  - SHELL PLATING 10µ MIN. OVER NICKEL, 100µ MIN
  - CONTACT MATERIAL: BeCu
  - CONTACT PLATING: 10µ MIN. OVER NICKEL, 100µ MIN

**PROPRIETARY AND CONFIDENTIAL**  
 THE INFORMATION CONTAINED IN THIS DRAWING IS THE SOLE PROPERTY OF ADAPTERS-PLUS INC. ANY REPRODUCTION IN PART OR AS A WHOLE WITHOUT THE WRITTEN PERMISSION OF ADAPTERS-PLUS IS PROHIBITED.

| UNLESS OTHERWISE SPECIFIED:          |  | NAME      | DATE        |
|--------------------------------------|--|-----------|-------------|
| DIMENSIONS ARE IN INCHES             |  | DRAWN     | AM 09/16/20 |
| TOLERANCES:                          |  | CHECKED   | SB 09/16/20 |
| FRACTIONAL ± .1                      |  | ENG APPR. |             |
| ANGULAR: MACH ± .1                   |  | MFG APPR. |             |
| TWO PLACE DECIMAL ± .01              |  | Q.A.      |             |
| THREE PLACE DECIMAL ± .005           |  | COMMENTS: |             |
| INTERPRET GEOMETRIC TOLERANCING PER: |  |           |             |
| MATERIAL                             |  |           |             |
| FINISH                               |  |           |             |
| DO NOT SCALE DRAWING                 |  |           |             |

|   |                 |              |
|---|-----------------|--------------|
|  Adapters-Plus Inc.<br>Ph: 209-839-0200<br>web: www.adapt-plus.com |                 |              |
| TITLE:  |                 |              |
| <b>85 PGA SOCKET<br/>         13X13 GRID</b>  |                 |              |
| SIZE  | DWG. NO.        | REV          |
| <b>A</b>  | PS085B-013XGG-P | <b>A</b>     |
| SCALE: 2:1  | WEIGHT:         | SHEET 1 OF 1 |

A

2

1